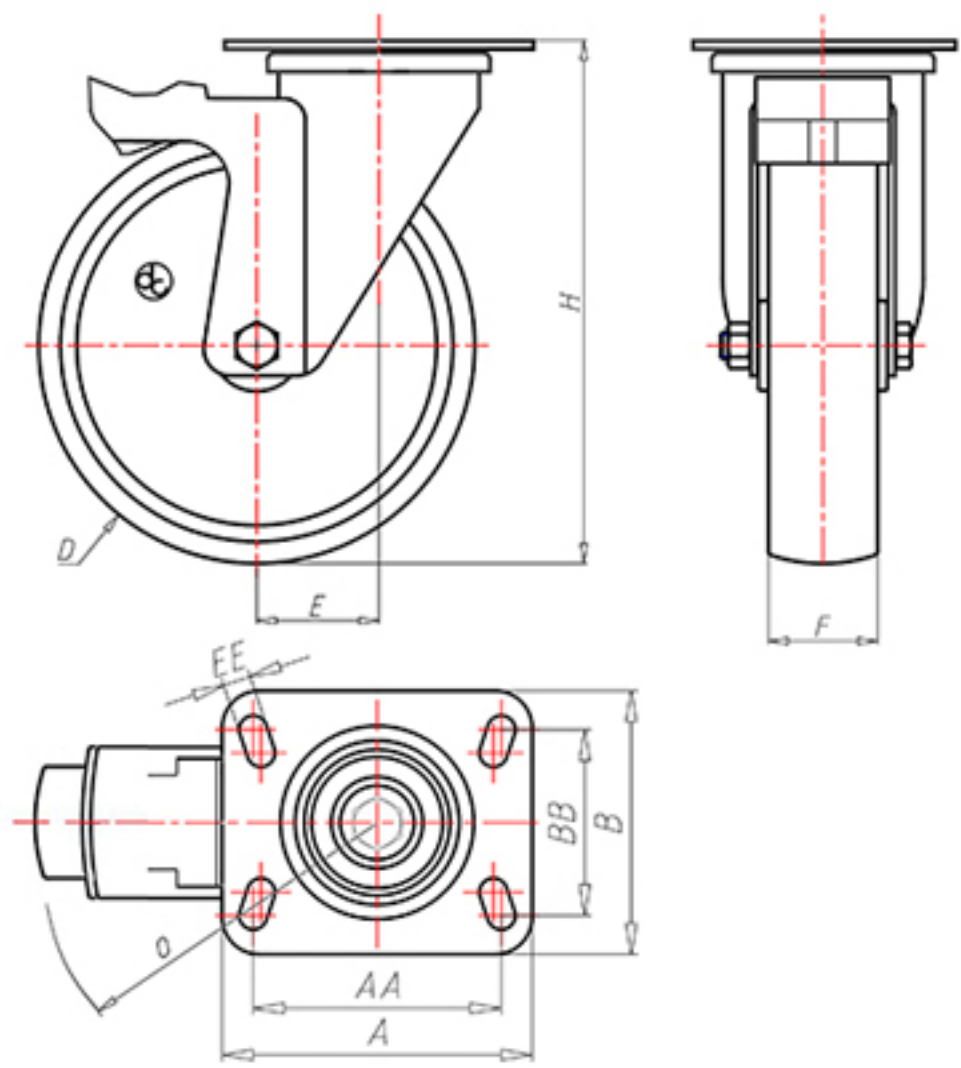


D-NAMIC

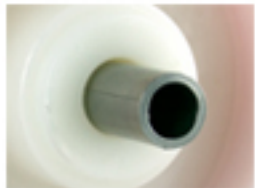
92 Shore A
+90°C
-40°C



	D	80
	F	33
	H	110
	AxB	100x85
	AAxBB	80x60
	EE	9
	E	40
	O	124
	LC	210



Code for plain bore wheel
XNGZ8040PFS



Code for wheel with roller bearing
XNGZ8040PRFS



Code for wheel with double sealed ball bearing
XNGZ8040PCFS



Code for wheel with double sealed Inox ball bearing
-

