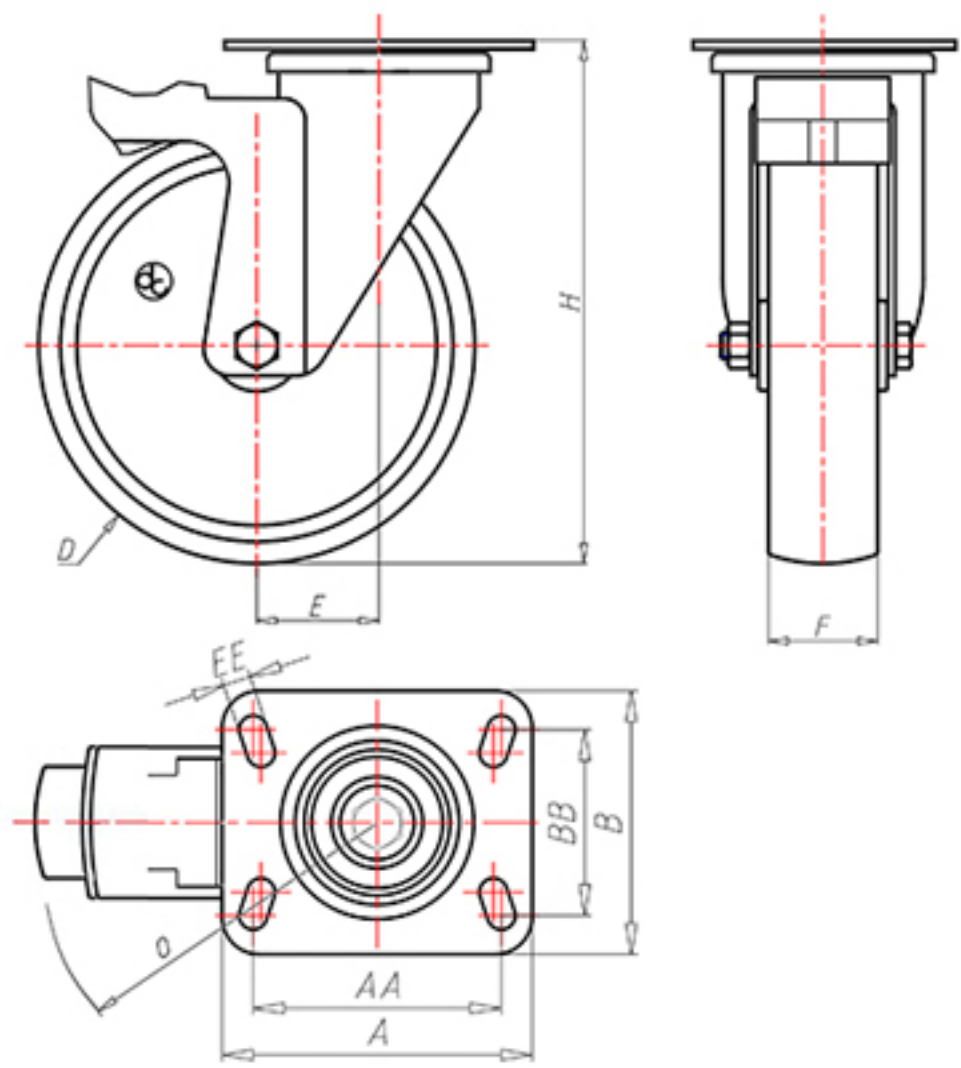


D-NAMIC

92 Shore A
+90°C
-40°C



	D	150
	F	40
	H	184
	AxB	100x85
	AAxBB	80x60
	EE	9
	E	46
	O	124
	LC	280



Code for plain bore wheel
XNGZ15045PFS



Code for wheel with roller bearing
XNGZ15045PRFS



Code for wheel with double sealed ball bearing
XNGZ15045PCFS



Code for wheel with double sealed Inox ball bearing
-

