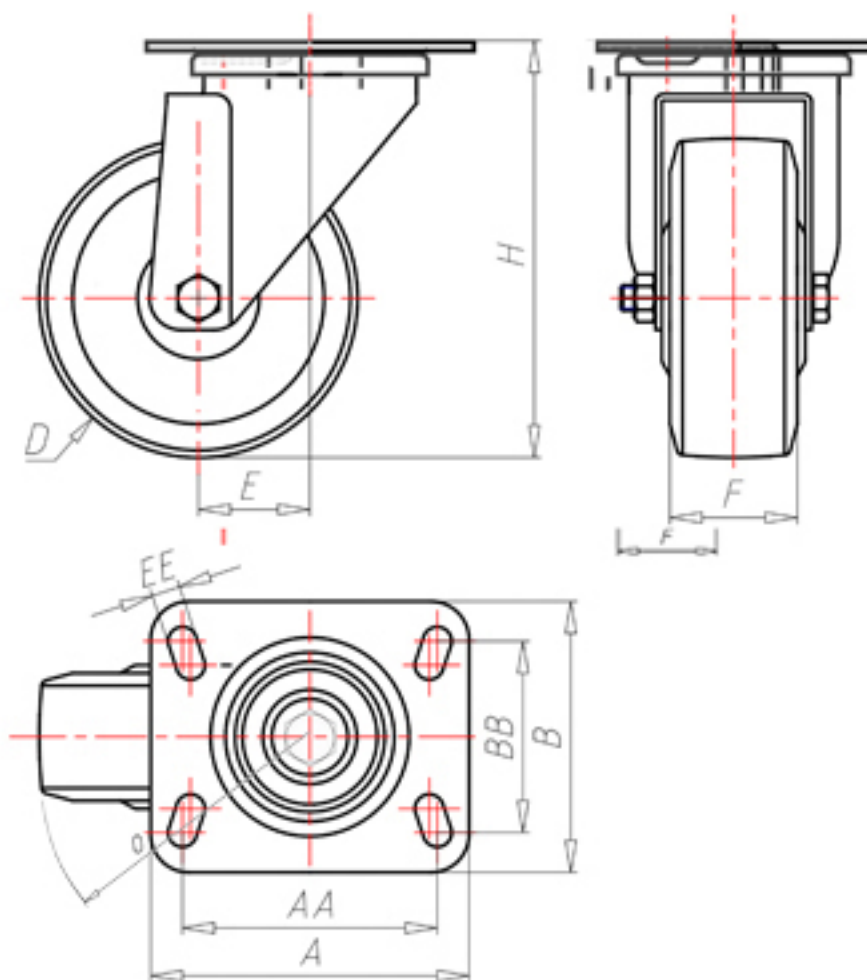




+260°C  
-40°C



	D	80
	F	30
	H	110
	AxB	100x85
	AAxBB	80x60
	EE	9
	E	40
	O	82
	LC	100



Code for plain bore wheel

**RGZ80P**



Code for wheel with coated bush

**RGZ80PBR**



Code for wheel with double BT self-lube bush

**RGZ80PBT**



Code for wheel with double HT ball bearing

**RGZ80PC**

