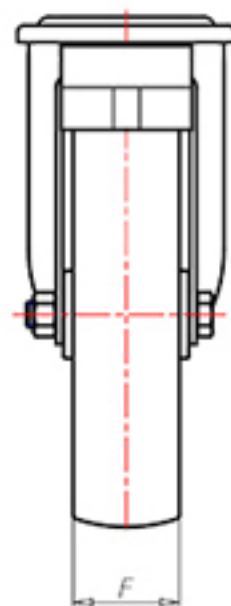
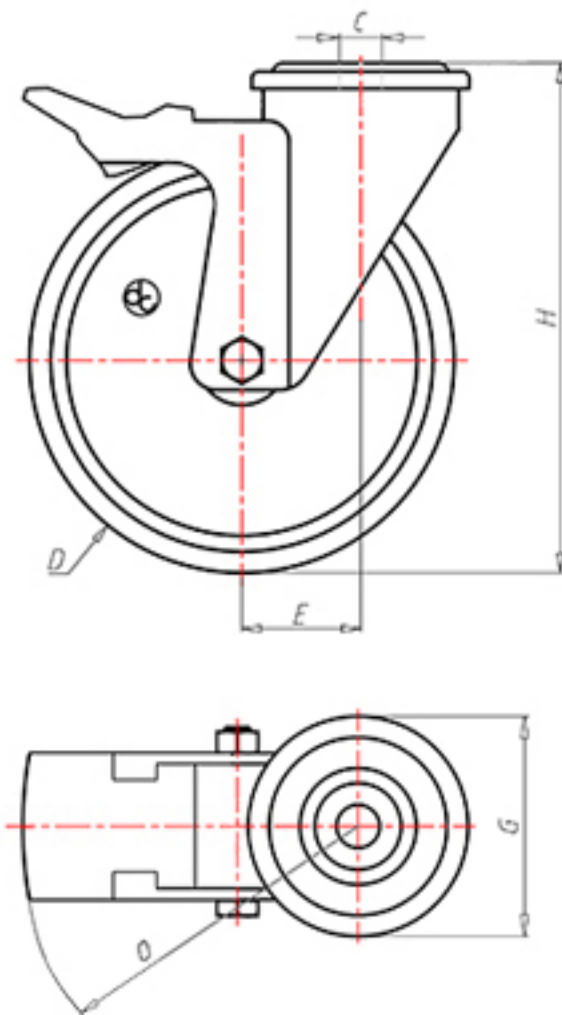




+150°C  
-40°C



|  |           |      |
|--|-----------|------|
|  | D         | 80   |
|  | F         | 35   |
|  | H         | 108  |
|  | G         | Ø 77 |
|  | C         | Ø 12 |
|  | E         | 40   |
|  | O         | 124  |
|  | Kg weight | 200  |
|  | LC        |      |



Code for plain bore wheel

LPX8040FA



Code for wheel with coated bush

LPX8040BRFA



Code for wheel with double BT self-lube bush

LPX8040BTFA



Code for wheel with double HT ball bearing

-

